

How to Fix Scanner Not working in Windows 11

< Problem in details >

If your Windows 11 computer connects to scanner in a network environment (LAN) during the restart the PC, it may fail to load driver because of a compatibility issue between the scanner and the new version of Windows 11.

< Current status >

We have no other choice but to wait a remedy for use with Windows 11 because this is Windows 11 common problem.

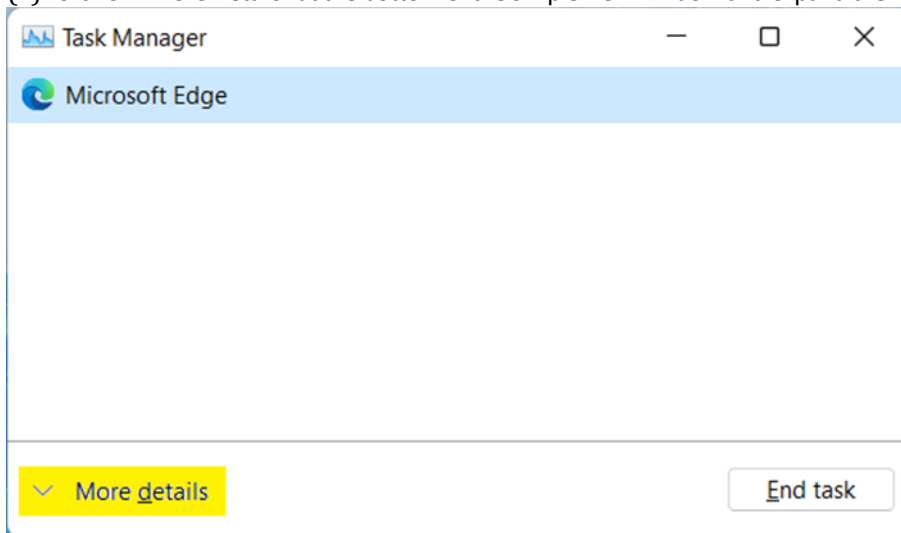
< Workaround >

If you had a problem connecting to scanner, there is a workaround by which you can restart Windows Imaging Acquisition (WIA) service manually.

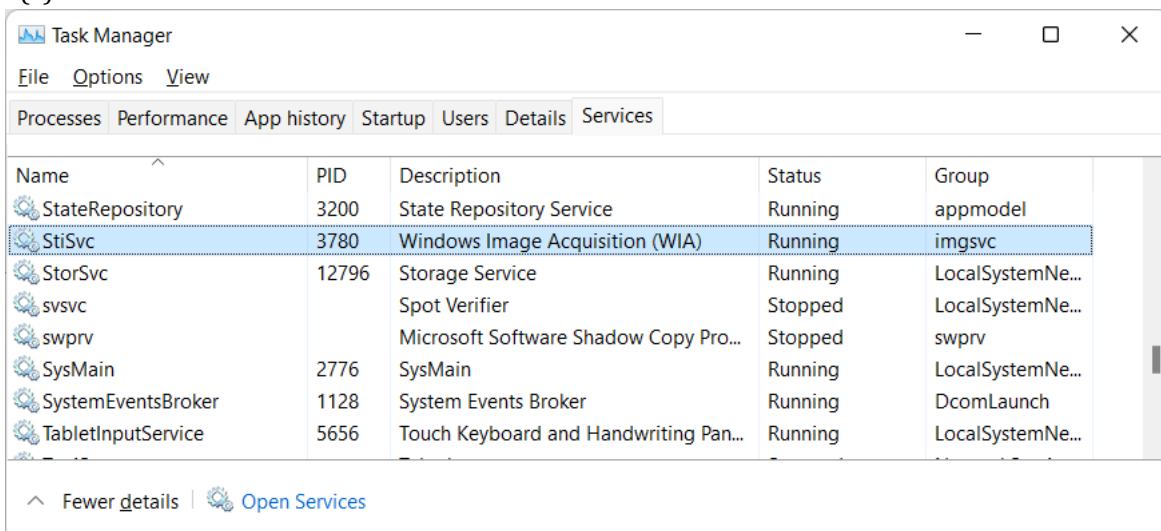
Follow the steps below.

(1) Press [Ctrl] + [Shift] + [Esc] to open the Task Manager and run it.

(2) Click on "More Details" at the bottom of the simple view window and expand the list.



(3) Go to "Services" tab and find "StiSvc" from the name list.



(4) Right-click on "StiSvc" and select "Restart" from the context menu.

Restart the Windows Image Acquisition service to resolve this issue.

