

How to send to Gmail after Google account security enhancements

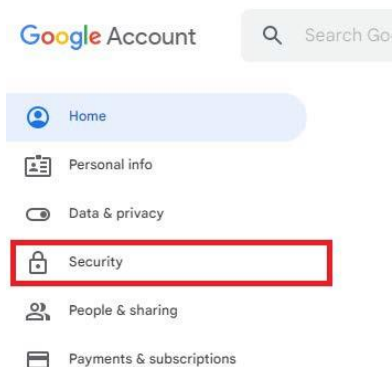
■ Outline

After May 30, 2022, the current Gmail settings will no longer be able to send data to Gmail with our data logger (GL series) and attached software due to the enhanced security of Google Accounts.

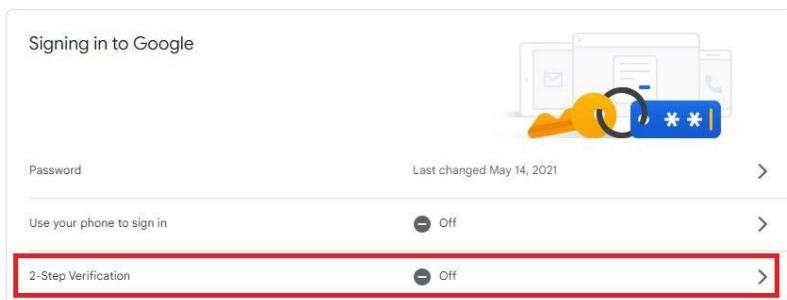
Please configure the following settings to send to Gmail.

■ Gmail Setup Procedure

1. Access your Google Account page and sign in with the email address you use.
2. Select "Security" on the Settings screen.

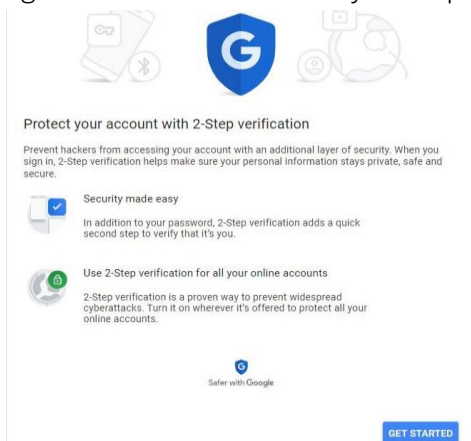


3. Click on "2-step verification process" in the "Signing in to Google" section.

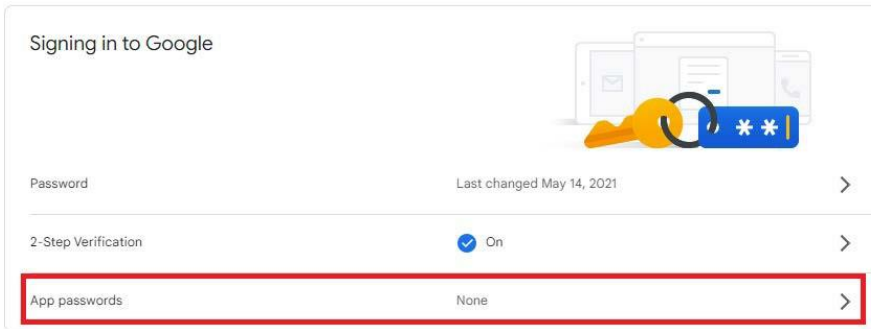


4. Enable the 2-step verification process.

※Registration must be done by smartphone, security key, text message, etc.



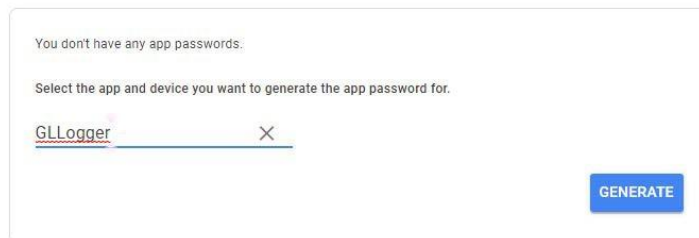
5. With "2-step verification process" turned on, click on "App Passwords".



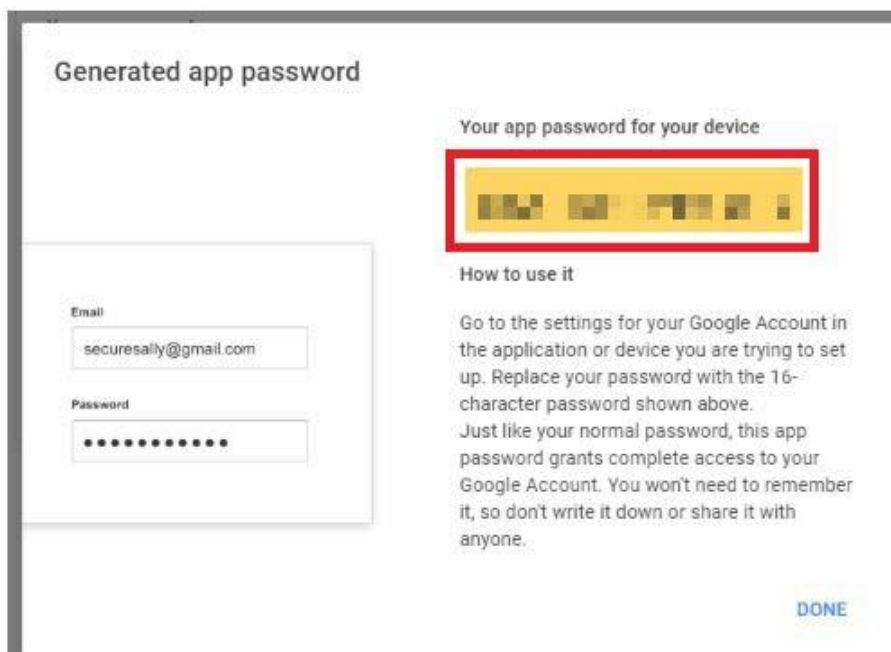
6. Select "Select Apps" then "Mail" and "Select Device" then "Other (enter a name)". Enter any name in the input field and click "GENERATE".

← App passwords

App passwords let you sign in to your Google Account from apps on devices that don't support 2-Step Verification. You'll only need to enter it once so you don't need to remember it. [Learn more](#)



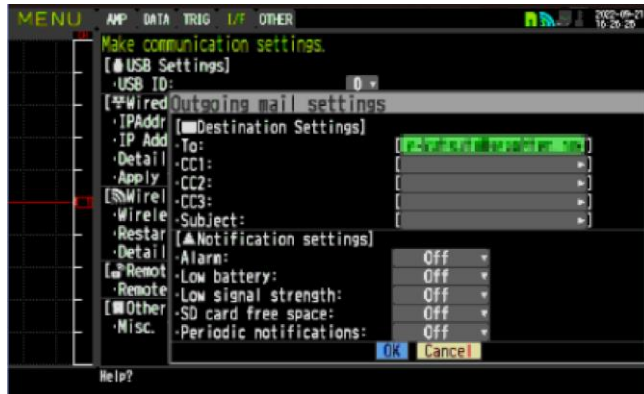
7. The generated password will be displayed. Please use this password.



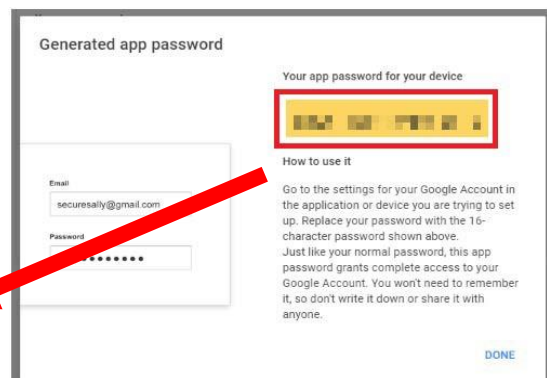
■ Mail function setting procedure (for GL devices)

Configure mail settings in the GL application. (Below is an example of the setting with "GL840".)

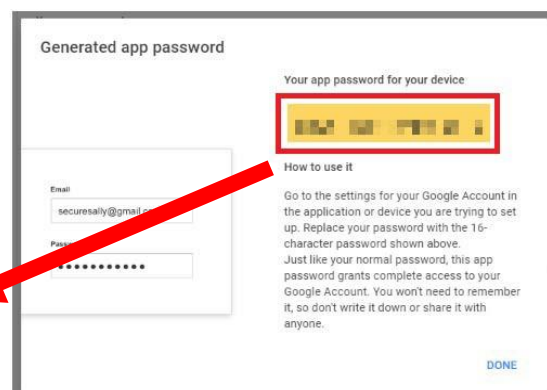
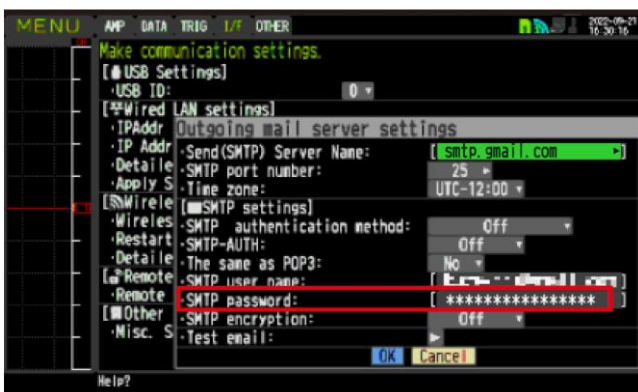
1. Set the destination from "MENU" → "I/F" → "Other settings" → "E-mail Settings" → "Email Send Settings" to any address. After setting, select "OK" to confirm.



2. From "E-mail Settings" → "Email account settings", set the username, password, and email address. Enter the username and email address of your Gmail account for the username and email address. **For "Password", enter the password generated by "App Password" in your Google Account.** After setting, select "OK" to confirm.



3. From "E-mail Settings" → "Outgoing mail sever settings", enter each item. In this case as well, enter the password generated by **the "App Password" of your Google Account for the "SMTP Password"**.



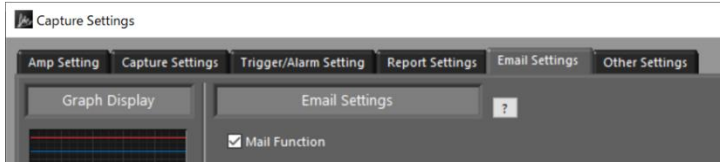
4. After setting up, perform a test transmission and confirm that the e-mail was successfully sent.

■ Mail function setting procedure (for GL application)

Configure mail settings in the GL application.

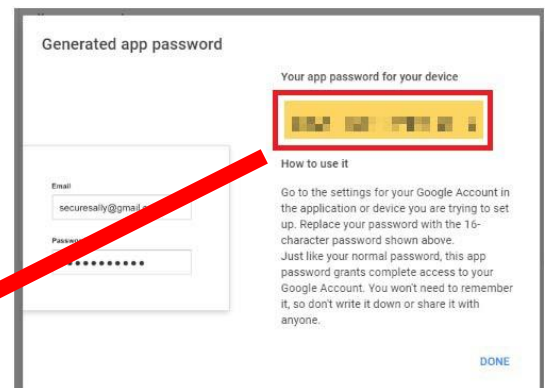
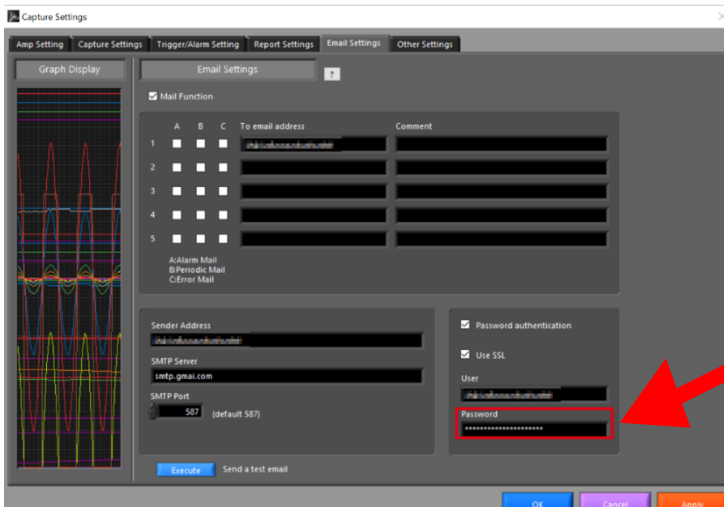
(Below is an example of the settings for "GL100_240_840- APS".)

1. Open the "Capture Settings" → "Email Settings" screen and check the "Mail Function" checkbox.



2. Enter each of the mail settings.

At this time, please enter the password generated by "App Passwords" in your Google Account.



3. After setting up, perform a test transmission and confirm that the e-mail was successfully sent.