

How to import Graphtec Pro Studio / Graphtec Pro Studio Plus data in Graphtec Studio 2

To load design data created with Graphtec Pro Studio into Graphtec Studio 2, **you must save it as a PDF file.**

Graphtec Studio 2 does not support Graphtec Pro Studio FS files, so you cannot open the design data as is.

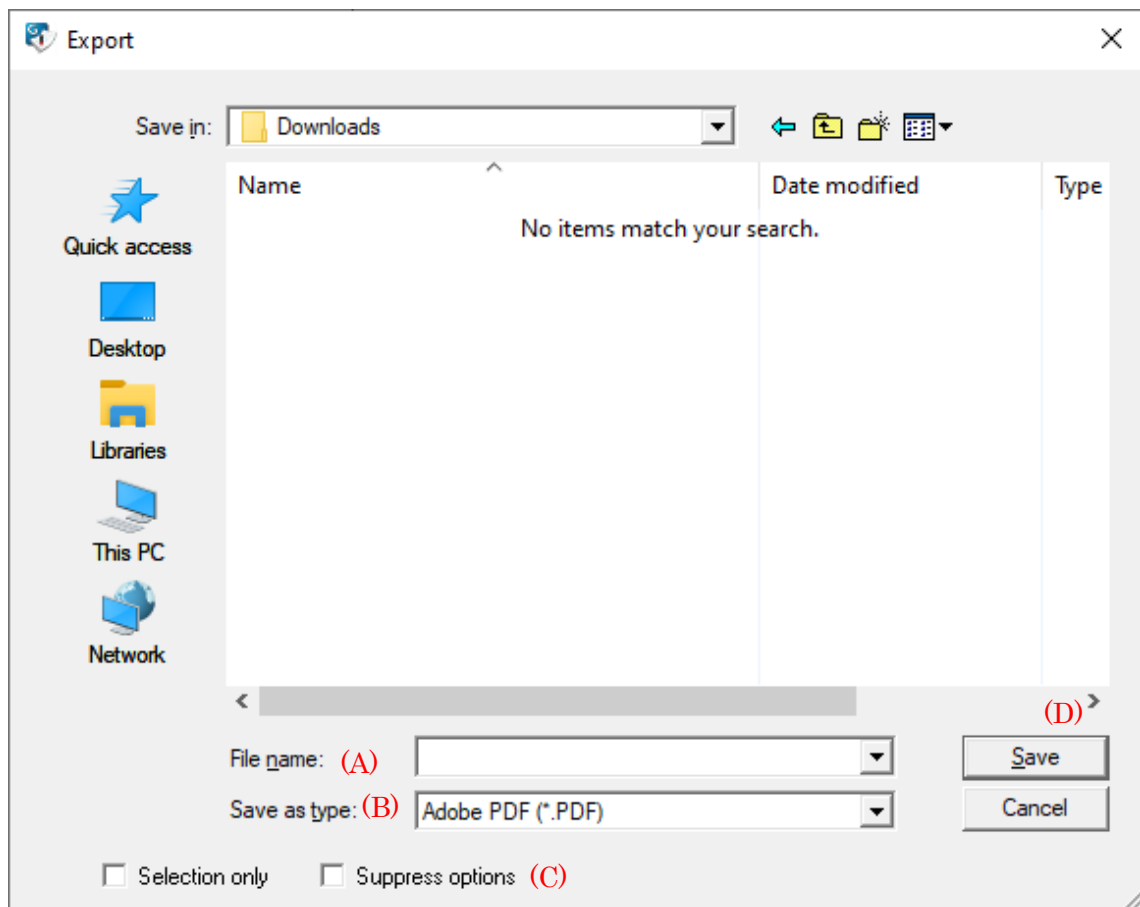
Follow the steps below, save it as a PDF file from Graphtec Pro Studio.

1. In Graphtec Pro Studio, open the design data to be transferred to Graphtec Studio 2.
2. Select the [File]-[Export] menu.
3. The [Export] screen will open, so make the following settings and click the [Save] button (D).

File name (A): Enter the **name of the PDF file** to be saved.

Save as type (B): Specify "**Adobe PDF (*.PDF)**".

Suppress options (C): **Uncheck** the box.

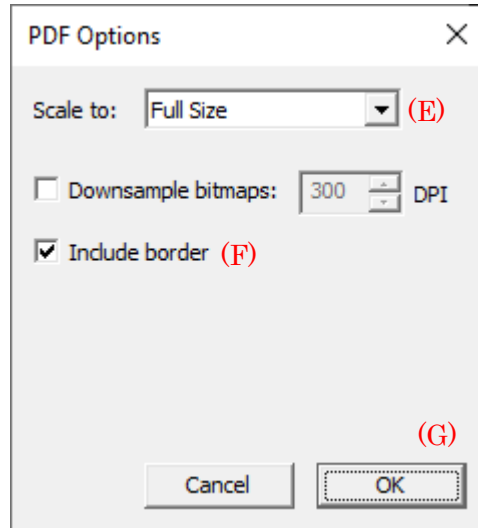


4. The [PDF Options] screen will open, so make the following settings and click the [OK] button (G).

<For data that does not include contour cutline>

Scale to (E): Specify "**Full size**".

Include border (F): **Check** the box.

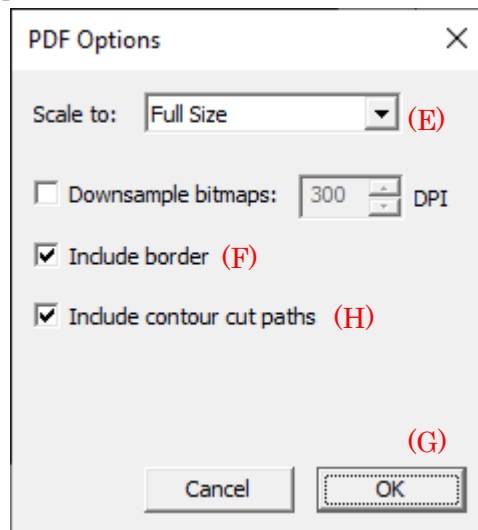


<For data that includes contour cutline>

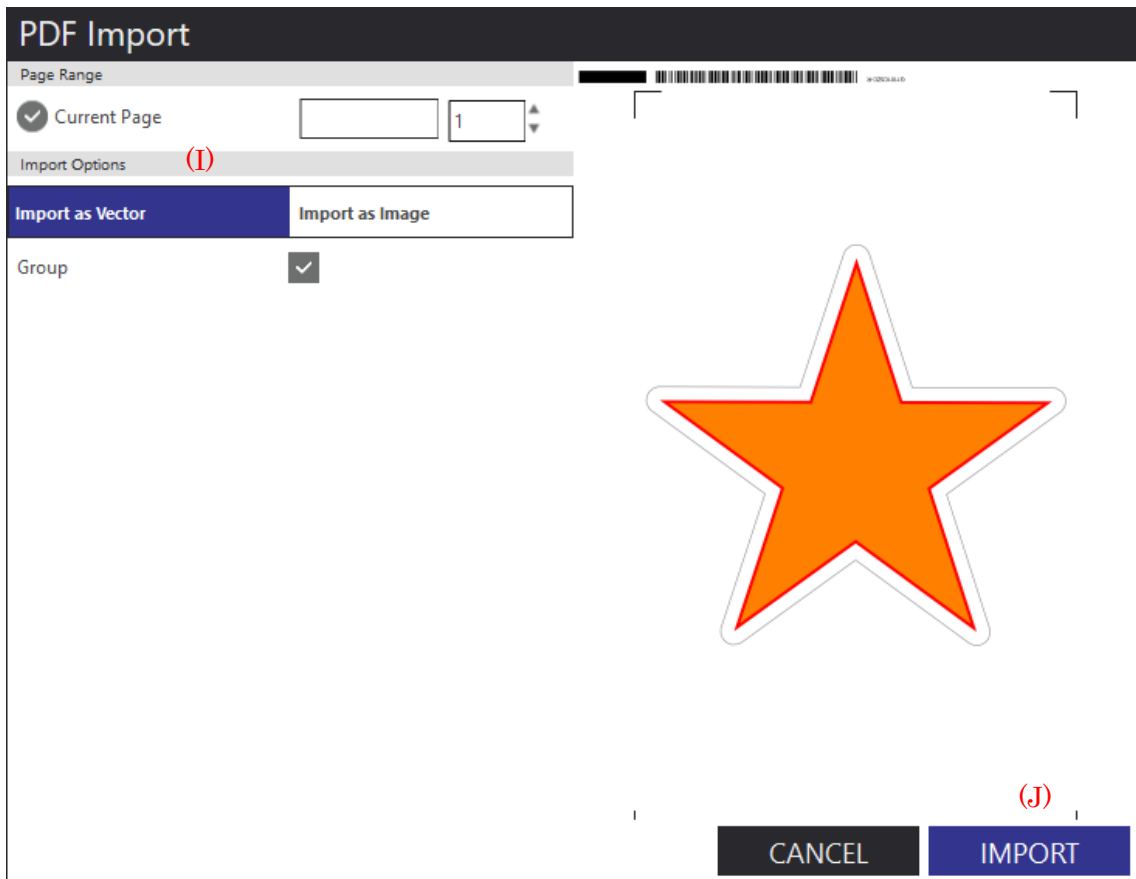
Scale to (E): Specify "**Full size**".

Include border (F): **Check** the box.

Include contour cut paths (H): **Check** the box.



5. The PDF file will be exported.
6. In Graphtec Studio 2, select [Open] from the [File] menu and specify the PDF file exported in step 5 to open it.
7. The [PDF Import] screen will open, so make the following settings and click the [IMPORT] button (J).
Import Options (I): Specify "Import as Vector".



8. The design in the PDF file will be loaded onto the Graphtec Studio 2 design screen.

End